



## The Journey to NetZero



1

## The Journey to NetZero

### Rules of Engagement

- Please join the webinar on mute with your camera OFF, which should be maintained during the presentation.
- Participants will be invited to ask questions. Please raise your hand using the icon on Teams or simply turn on your camera or use the chat function.
- The presenters may invite you by name to contribute to the session. Where possible, when responding, please turn on your camera so the participants know who is speaking.

### Objectives for the Webinar

- Working with webinar participants to explore development of an EV Transition Plan
- The Journey to NetZero
- Topics
  - The World to NetZero 2050
  - NetZero Emission Fleet
  - EV Charging – Power Installation
  - Not all BEVs are Equal
  - To Transition consider PHEV or Just Hybrid
  - Reducing Carbon Footprint
  - Integrating Data
  - Uniqco and the Team



© Copyright Uniqco WA Pty Ltd



2

## Introduction

**Grant Andrews**

- 45 years experience working in the motor vehicle industry
- Combined with 30 years consulting to Local and State Government
- Passionate about financial modelling and innovation



**John Ravlic**

- Associated with Local Government for over 30 years as an executive and consultant
- Passionate about developing best practice service delivery to meet community needs



*Quote*

*Many business leaders have historically underestimated the speed of new green technologies. In the energy sector, for example, solar, wind, and electric vehicle technologies were all developed faster and more economically than originally predicted.*



© Copyright Uniqco WA Pty Ltd



3

## The World to NetZero 2050



**Name:** Belinda Bastow  
**Position:** Director / Sustainability Specialist  
**Company:**



**Email:** [belinda@integratesustainability.com.au](mailto:belinda@integratesustainability.com.au)  
**Mobile:** 0418950578

Belinda is a results-driven, self-motivated and people-focused director of Integrate Sustainability with proven abilities to engage with employee and stakeholders in order to deliver projects and integrate HSE aspects into company and project activities. I give consideration to protecting the unique biodiversity of Western Australia when working with my client and supporting aboriginal groups to protect significant values associated with the areas of interest. This can be seen through my work with the Great Victoria Desert Biodiversity Trust and the Yilka Land Management Plan.

**About Integrate Sustainability:**

A specialist environmental, heritage, native title and safety consulting company based in Perth Western Australia. They offer a range of tailored services that assist organisations across a wide range of sectors in Australia. We believe sustainability and compliance are critical to the long term success of any organisation seeking to meet NetZero targets by 2050. We work with the Uniqco group to help their clients meet their NetZero targets for fleet and mobile assets



© Copyright Uniqco WA Pty Ltd



4

## Journey Towards Net Zero Emission Fleet

**What is NetZero from a Global Perspective?**

- Moving away from carbon based fuel sources
- Removing carbon from the atmosphere and locking it away
- No GHG emission by 2050


**How does this impact each State in Australia?**

- All state are targeting zero emissions by 2050
- Vic, QLD & NT have a 50% renewable energy target by 2030
- Commonwealth have incentives for technology deployment


**What does this mean for Australia?**  
26-28% reduction in GHG emission from 2005 level by 2030  
  
Net zero by 2050

**What is the job for Councils, given that transport is their second biggest emitter?**

- Plan for NetZero by or before 2050
- Moving to low or no-carbon fuel sources
- Offsetting greenhouse emission



© Copyright Uniqco WA Pty Ltd



5

## Journey Towards Net Zero Emission Fleet

Expectations are growing for the sector to transition towards electric fleet.



Moving your council towards Net Zero Emission Fleet will require a different mind-set and new approaches.

Provision of council services enabled by fleet and plant will experience significant disruption in next couple of years.

Tackling this challenge will require new approaches and new ways of thinking:

- reimagine how we use data to identify the required fleet, which will transition to EVs;
- rethink procurement processes, how best value is defined and weighted selection criteria determined;
- reconsider the way we think about procurement, ownership and funding of EV fleet; and

Whole-of-council approaches will also be required to successfully tackle these challenges.

6

## EV Charging – Power Installation Considerations

- Talk to your local power supplier before you consider installing chargers



EV Charge Level	(L1)	(L2)	(L3)
Charging power	1.4kW – 2.4Kw	Up to 7.2kW AC	25kW – 350kW DC
Outlet required	Standard household 240V AC socket	This requires a level 2 wall-box installed 240V AC	Special infrastructure required. Large power supply required 480V DC
Application	Low use of a vehicle as charge times can be long	Daily use of a vehicle to be charged overnight	Fast charge for people on the move
Charge time	20 – 40 hours for a full charge	5 – 11 hours	30 min – 1 hr depending on the vehicle
Install cost	Nil	\$3,000 to \$20,000	\$100,000 - \$400,000

A Guide to Electric Vehicles

WA Department of Water and Environmental Regulation



© Copyright Uniqco WA Pty Ltd



7

## Not all BEV's are Equal

Charge times are affected by the ability of the vehicle to accept the charge. Don't assume all vehicles are equal

Make	Model	Range km with aircon approx.	Charge time AC (Home charging)	Charge time DC (Public charging)
Hyundai	IONIQ	250	7.2kW-6.5hrs	44kW-47min
Hyundai	Kona	250	7.2kW-6.5hrs	50kW-50min
Nissan	Leaf	225	3.6kW-12.3hrs	46kW-41min
Volvo	XC40	340	11.0kW-8.15hrs	151kW-32min
Tesla	Model 3	560	11.0kW-8.15hrs	250kW-25min
MG	ZS	260	6.6kW-8.45hrs	75kW-42min
Mercedes	EQA 250	355	11.0kW-7.15hrs	112kW-29min

<https://ev-database.org/>



© Copyright Uniqco WA Pty Ltd



8

## To Transition Consider PHEV OR Just Hybrid

- Plug in or hybrid electric vehicles will reduce emissions substantially.
- These vehicles will allow environmental savings and introduce environmental savings habits to drivers
  - Plug in regularly dramatically reduces fuel consumption
  - Users don't necessarily have to set up a charger at home if they can charge at work
  - While not as inexpensive as an ICE vehicle they are a lower cost and great specification
  - Resale value is predicted to be very strong

Hyundai Ioniq Plug-In Hybrid Elite



Kia Niro PHEV S



Mitsubishi Outlander PHEV ES



Volvo XC40 Recharge



Cars Guide

© Copyright Uniqco WA Pty Ltd



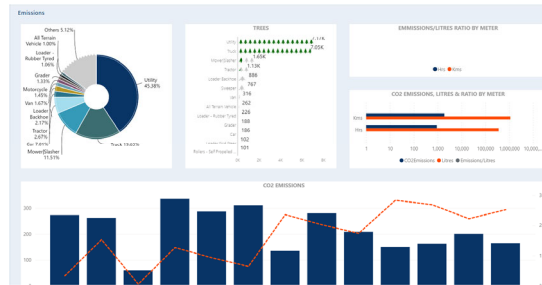
9

## Reducing the Carbon Footprint

### Reporting and Monitoring

- Adopting Net Zero by 2050
- Adopting 2030 Targets
- Develop a Plan to guide your progress towards the targets
- Regular reporting and monitoring and adjustment of activity

**You can't wait until 2028 to review your progress Towards your targets!**



© Copyright Uniqco WA Pty Ltd



10

## Integrating Data - Uniqco Fleet Data Analytics

Integrating asset data, and providing easy to use dashboards to reduce risk and lower cost

© Copyright Uniqco WA Pty Ltd

11

## Who are Uniqco

### Uniqco

- Grant Andrews – CEO Fleet Management
- John Ravlic – Local Government Service delivery including fleet
- Celia Jordaan – Procurement and Contracts (Portt)
- Belinda Bastow – Sustainability and Environment
- Jason Hall – Economic Modelling
- Phil Aquilina – Full Stack Developer
- Alex Winzen – Special Vehicles and equipment

### CT Management

- Michael Courtney – CEO Financial Management, Service planning and Asset Management
- Jarrod Bryant - Regional Manager NSW Asset Management, Project Management, Service reviews and Governance
- Owen Harvey QLD – Business Development, Asset Management, Condition assessment and Project Management
- Alf Della Monica - Regional Manager VIC, Project Management, Service Reviews, Asset Management, Governance

© Copyright Uniqco WA Pty Ltd

12

## Summary

- The world around us is moving towards NetZero by 2050
- The least you can do is put together a Transition Plan
- Your Transition Plan will guide your strategic direction
- BEVs are just the beginning
- Sooner you start - sooner you realise how much work needs to be done
- Resources and help are all around you reach out as required



13

## What are the Barriers?

- Using the chat function please identify barriers

### HOW CAN WE HELP?



14